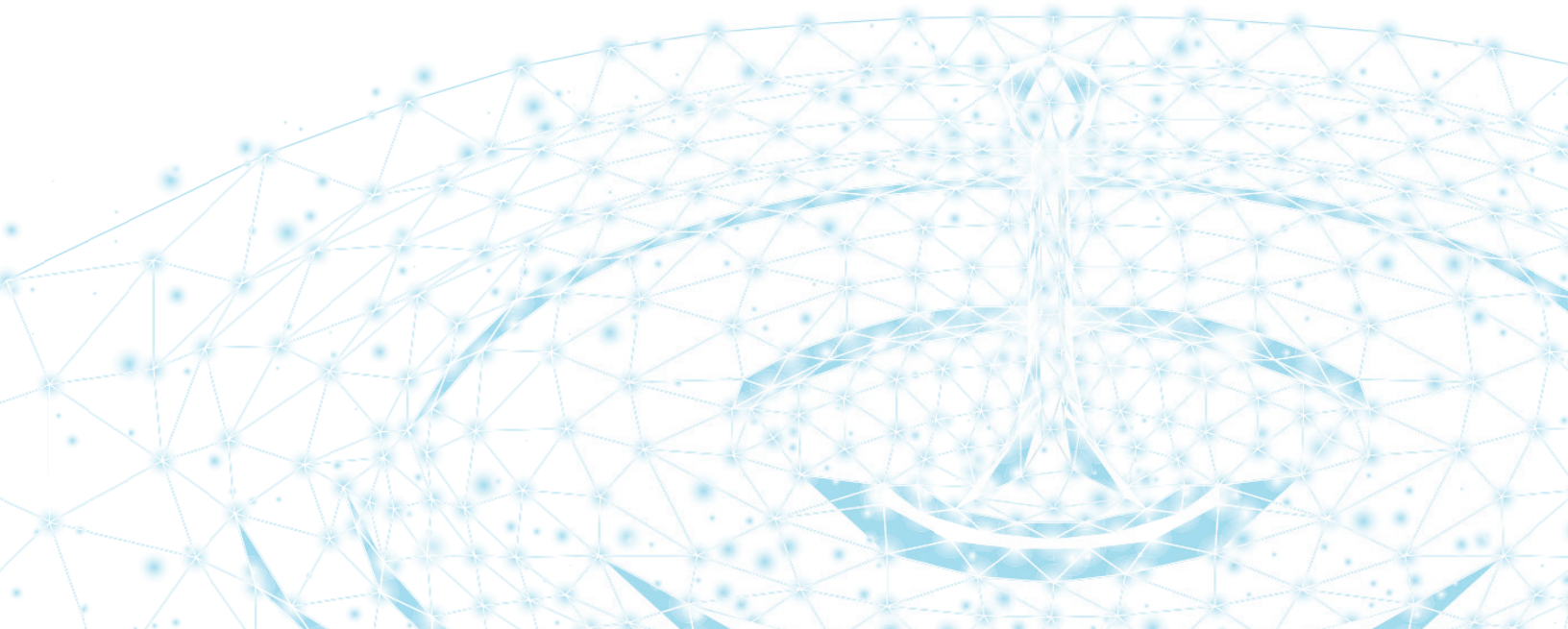
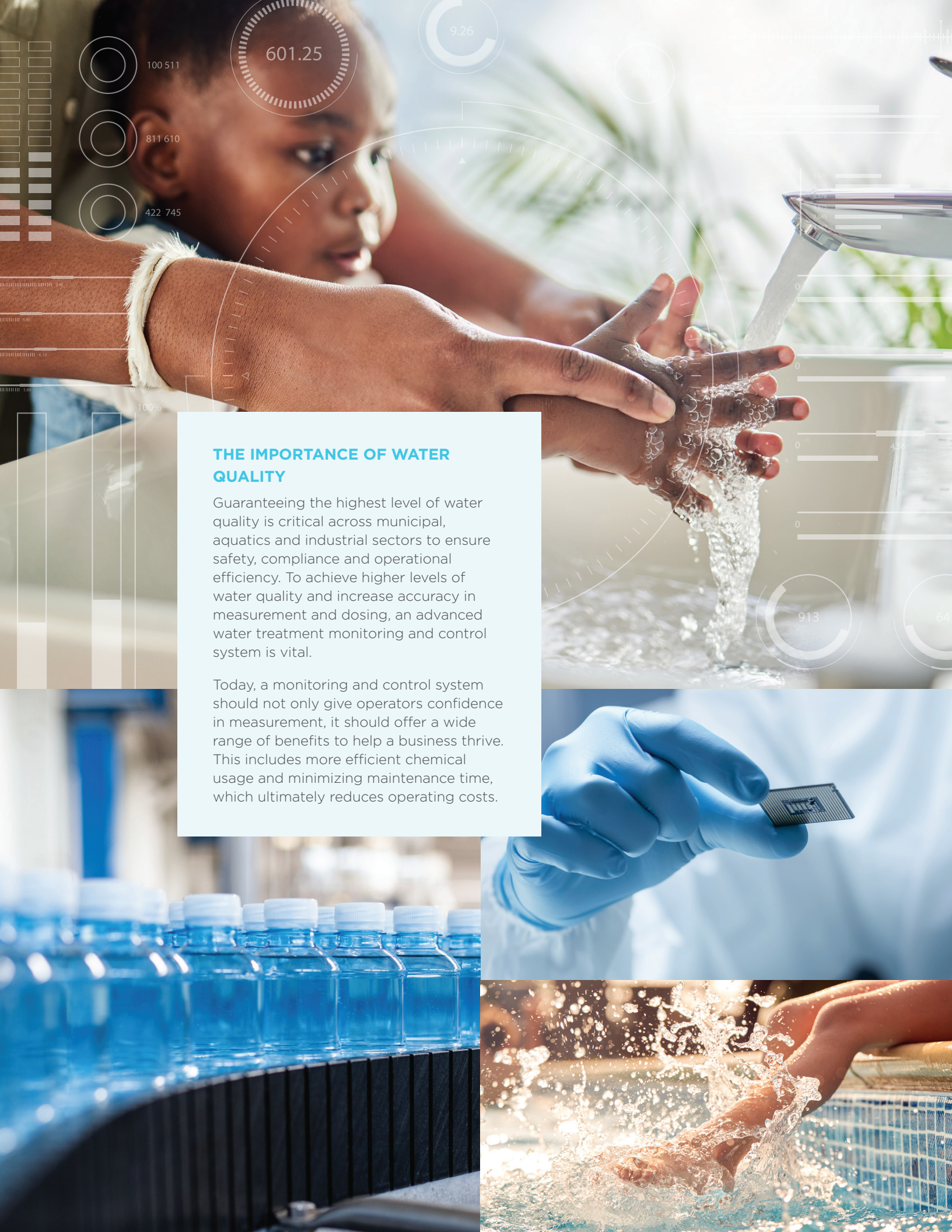




evoQUA
WATER TECHNOLOGIES

RIVO™ I SYSTEM
THE SMARTER WAY
TO CLARITY





THE IMPORTANCE OF WATER QUALITY

Guaranteeing the highest level of water quality is critical across municipal, aquatics and industrial sectors to ensure safety, compliance and operational efficiency. To achieve higher levels of water quality and increase accuracy in measurement and dosing, an advanced water treatment monitoring and control system is vital.

Today, a monitoring and control system should not only give operators confidence in measurement, it should offer a wide range of benefits to help a business thrive. This includes more efficient chemical usage and minimizing maintenance time, which ultimately reduces operating costs.

The Rivo™ System

THE SMARTER WAY TO CLARITY

Monitoring and controlling water quality just got easier. Evoqua's innovative series of Rivo™ systems bring greater intelligence of water treatment to operators. The Rivo system is the latest smart water technology designed and manufactured to deliver valuable insights and control of water quality, compliance, safety, and efficiency.

FLEXIBILITY AT ITS CORE

The Rivo system provides water treatment plant operators with a monitoring solution for seamless integration with existing water treatment assets. The plug-and-play modular design incorporates a wide range of input and output ports to help you grow as requirements change. The Rivo Series can be easily adapted to give you the greatest flexibility with minimal effort.



UNRIVALED PERFORMANCE

Benefits

- Seamless integration into any water treatment system
- Simple set-up and data management for complete control of water quality
- Optimize chemical usage
- Compliance-focused support to meet disinfection regulations
- Remote management across multiple facilities
- Optimize operations through our flow cell measurement technology
- Proven security measures for safe and secure operations



The Next Generation

OF ANALYZERS AND CONTROLLERS

The Rivo system draws upon the latest advancements in smart water technology, connectivity, and usability, ensuring the highest quality water is used.

The system design allows operators to monitor multiple process parameters in real time, assuring compliance with health, safety and regulatory standards. The remote monitoring management capabilities also include alerts, helping to reduce unplanned downtime.

RIVO™ I SYSTEM

Industrial Applications:

process water for aquaculture, cooling towers, food & beverage, microelectronics and pharmaceutical industries

Municipal Applications:

drinking water, wastewater

RIVO™ I SYSTEM—AQUATICS

Aquatics Applications:

swimming pools, spas, waterparks and splashpads



Intuitive, high-resolution touchscreen for easy operation

- High-performance central processing unit
- Reliable measurement and data

COMPARE RIVO SYSTEMS

	Rivo I System	Rivo I System—Aquatics	Rivo I Control System
Sensor Parameters	Management of up to 2 parameters*	Management of pH and Redox	—
Control Functions	Optional	Dosing of chemicals (2–3 point)	Control of gas feed systems
Flow Cell Options	DEPOLOX®-R System Varia Sense™-R System Flow Sense-R System Flow Mem-R System Micro/2000® System Deox/2000® System	DEPOLOX® POOL-R System Varia Sense™-R System BLU-R System	—

* Available water parameters include: Total chlorine, Free chlorine (Cl₂), Combined chlorine (NH₂Cl), pH, Fluoride (F), Conductivity, ORP (Redox), Potassium permanganate (KMnO₄), Ozone (O₃), Chlorine dioxide (ClO₂), Temperature

Range of integrated input and output ports

Input:

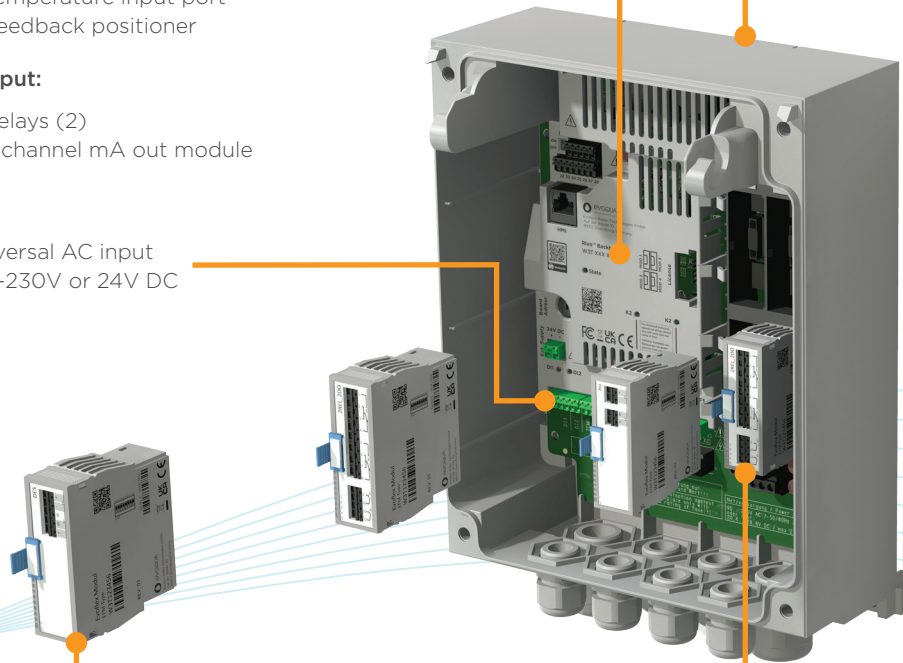
- Digital process inputs (2)
- 0/4-20 mA input ports (2)
- Temperature input port
- Feedback positioner

Output:

- Relays (2)
- 2 channel mA out module

Universal AC input
100-230V or 24V DC

Robust, compact design certified to IP66 certification



Plug-and-play modules to evolve with your business

Up to 4 flexible ports for modules

With our wide range of plug-and-play modules, we can customize the analyzer to meet your precise needs.

RIVO™ FLEX MODULE CARD OPTIONS

Rivo Dis-3E	Module for 3 electrode DEPOLOX® system sensors (disinfection measurements Cl2 free, ClO2, O3)
Rivo Dis-Mem	Module for membrane sensors (disinfection measurements Cl2 free, Cl2 tot, ClO2, O3)
Rivo mV	Module for Redox (ORP) sensor
Rivo pH	Module for pH sensor
Rivo Fluoride	Module for Fluoride sensor
Rivo 2AI	Module for universal mA signal sensors / measurement signals
Rivo 2AO-mA	Module for mA signal output
Rivo 2Rel2DO	Module with 2x relay output (SPCO)

The Rivo™ Solution

COMBINE THE RIVO SYSTEM WITH YOUR CHOICE OF EVOQUA FLOW CELL MEASUREMENT MODULES AND CERTIFIED SENSORS TO MEET YOUR SPECIFIC REQUIREMENTS

FLOW CELLS

Evoqua's flow and pressure-controlled flow cells ensure the accurate measurement of process parameters and are a key component of the Rivo system. A wide range of options are available to meet specific application and water quality requirements.



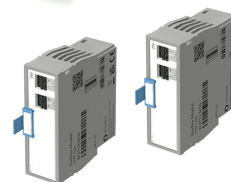
SENSORS

Evoqua's authorized sensors offer long-term measurement stability by providing a constant flow and temperature measurement of the flow cell. Our Rivo Flex Kits combine sensors, add-on modules and cables into one package.



RIVO SYSTEMS

A complete portfolio of measurement technology to meet the water quality demands of your industry.



ADD-ON MODULES

A wide range of plug-and-play extension modules that easily slot into the integrated input and output ports, enabling fast and simple upgrades.

Why the Rivo™ System



A TRUSTED SOLUTION

Evoqua process experts have designed and engineered advanced water treatment systems for over 100 years.



DIGITAL CONNECTIVITY

The Rivo platform is one of the core elements of Evoqua's connected ecosystem. The platform can be directly integrated into other Evoqua water treatment systems.



OPERATIONAL FLEXIBILITY

The Rivo system is designed to simplify water quality monitoring by integrating all water treatment equipment controls into one platform. The control system can be easily expanded to meet future monitoring requirements.



REGULATORY REQUIREMENTS

The Rivo System provides operators with confidence that their water quality measurements are meeting safety and compliance requirement in real time.



OPERATIONAL EFFICIENCY

Through the advanced monitoring and control capabilities of the Rivo system, water treatment plant operators can reduce cost and save time. The low maintenance requirements of the Rivo system combined with proactive alerts, and remote monitoring are key to reducing engineering time.

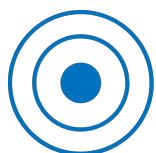


A SUSTAINABLE SOLUTION

Knowledge is power and key to meeting sustainability goals. The Rivo system is the heart of a water treatment system to provide valuable water quality data and help manage water usage.



TRANSFORMING
WATER
— ENRICHING —
LIFE



**AQUA
ANALYTIC**
AIR&WATER UKRAINE

WANT TO LEARN MORE?

🌐 <https://aquaanalytic.com.ua/>

📞 +38 057 725 95 01

✉ info@aquaanalytic.com.ua